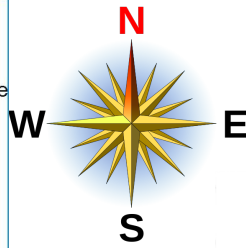


Oak Mountain State Park

advanced permanent orienteering course

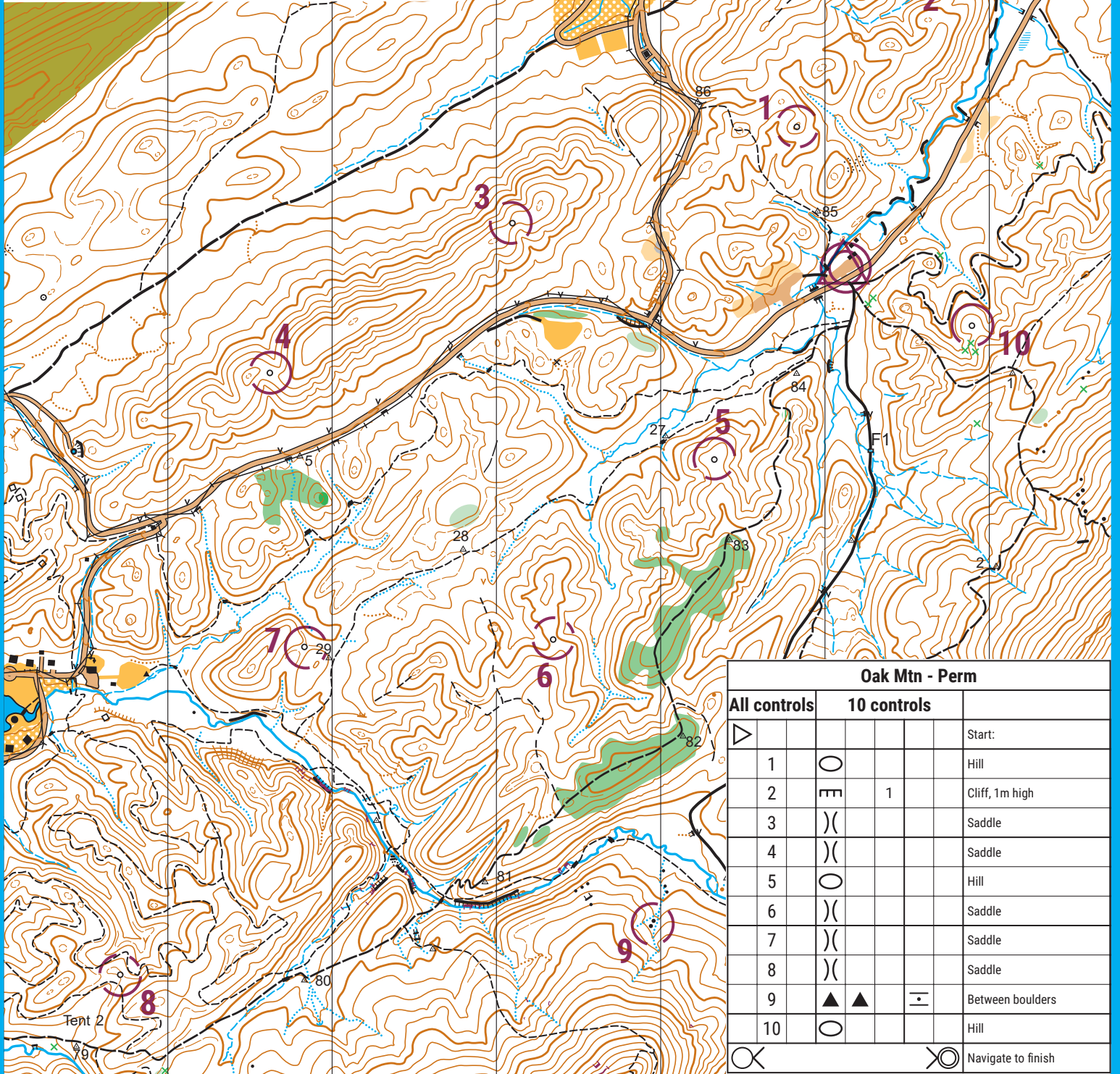
- road
- - - dirt road
- · - trail
- + - power line
- - - fence
- ~ ~ ~ contour line
- · - index contour
- - - form line
- - - ditch, gully
- ∇ pit
- × rootstock
- ▬ passable rock face
- ▬ impassable rock face
- ⊙ rocky ground
- small, large boulder
- × man-made feature
- ∇ rocky pit
- building
- forest - open
- forest - slow run
- forest - difficult
- forest - fight
- parking
- open field
- scattered trees
- rough open
- deadfall
- open/sandy



www.vulcanorienteering.org

contours 5 meters
scale 1:10,000

0 100m 200m 300m 400m 500m 600m



Oak Mtn - Perm					
All controls		10 controls			
▷					Start:
1	○				Hill
2	▬	1			Cliff, 1m high
3) (Saddle
4) (Saddle
5	○				Hill
6) (Saddle
7) (Saddle
8) (Saddle
9	▲ ▲		▬		Between boulders
10	○				Hill
⊗				⊗	Navigate to finish